

PART OF THE S.E. 1/4, SEC. 11, T.6N., R.2W., S.L.B. & M.
GRASSLANDS ESTATES SUBDIVISION

IN WEBER COUNTY

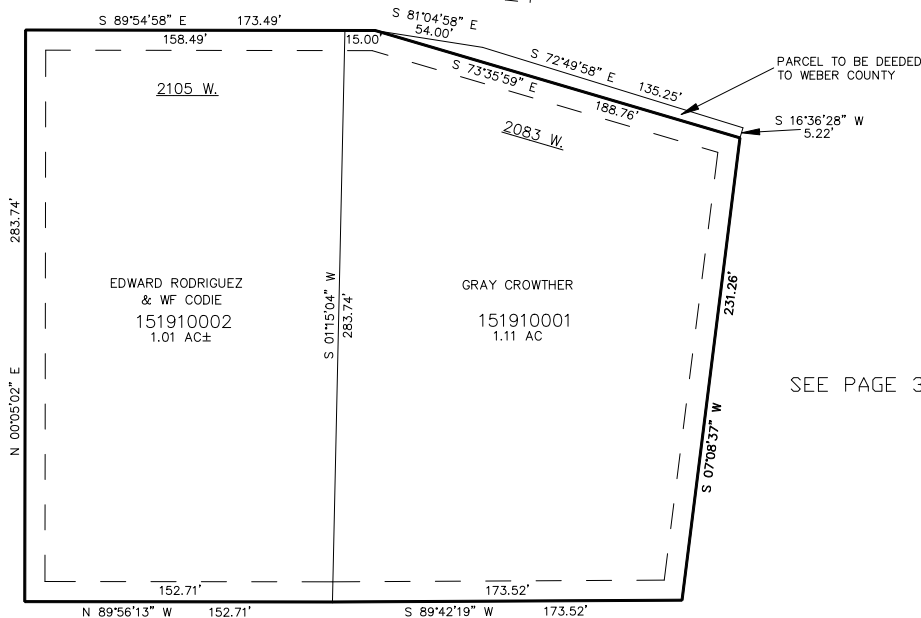
TAXING UNIT: 16

SCALE 1" = 50'

SEE PAGE 30-2

250 NORTH STREET

SEE PAGE 30-2



SEE PAGE 30-2

SEE PAGE 30-2

10' UTILITY & DRAINAGE EASEMENTS EACH
 SIDE OF PROPERTY LINES AS INDICATED
 BY DASHED LINES EXCEPT AS OTHERWISE
 SHOWN.

FOR COMPLETE ENG DATA SEE
 ORIGINAL DEDICATION PLAT IN
 BOOK 38, PAGE 84 OF RECORDS.